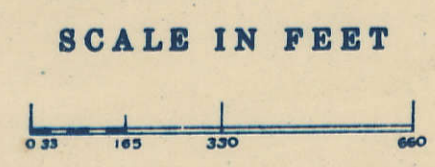


SECTION 24

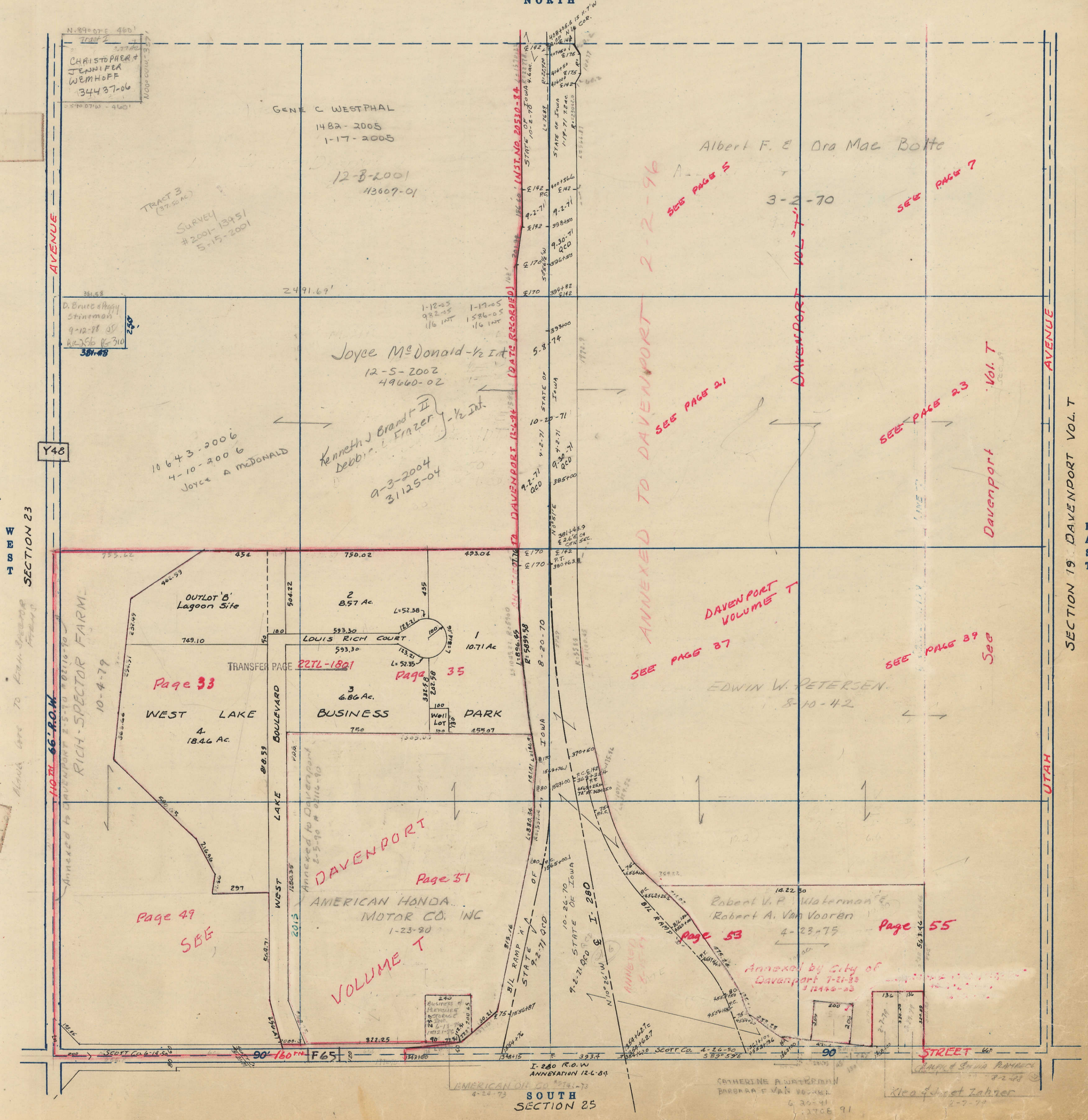
Township 78-North; Range 2
EAST OF THE FIFTH PRINCIPAL MERIDIAN



SCOTT COUNTY, IOWA
BLUE GRASS TOWNSHIP

SECTION 13
NORTH

Transfer Page 51d-55 03



CHRISTOPHER & JENNIFER WEMHOFF
34487-06

GENE C WESTPHAL
1482-2005
1-17-2005

12-8-2001
113609-01

Albert F. & Ora Mae Bolte

3-2-70

D. Bruce & Peggy Stinemah
9-12-88 SS
R1256 R-310
381-48

Joyce McDonald - 1/2 Int
12-5-2002
49660-02

Kenneth J Brandt II
Debbie L Frazer - 1/2 Int
9-3-2004
31125-04

10643-2006
4-10-2006
Joyce A McDonald

WEST LAKE
4
18.46 Ac.

Page 33

BUSINESS PARK

Page 35

DAVENPORT
VOLUME T

Page 51

AMERICAN HONDA MOTOR CO. INC
1-23-20

Page 49
SBE

DAVENPORT VOLUME T
SEE PAGE 37

EDWIN W. PETERSEN
8-10-42

SEE PAGE 39
See

Robert V. P. Waterman & Robert A. Van Vooren
4-23-75

Page 55

Annexed by City of Davenport 1-8-83

SOUTH SECTION 25

UTAH

SECTION 19 DAVENPORT VOL. T EAST

SECTION 23

Must be to from Survey of 1890

Y48

11071 66-P.O.W.

RICH-SPECTOR FARM
10-4-79

TRANSFER PAGE 227L-1801

DAVENPORT (2-2-94) (DATE RECORDED)

ANNEXED TO DAVENPORT 2-2-96

DAVENPORT VOL. T

Davenport Vol. T

STREET

I. 280 R.O.W ANNEXATION 12-6-84

CATHERINE A WATERMAN
BARBARA F VAN VOORN
6-20-91

Klea Gussert Zahner
2-7-79